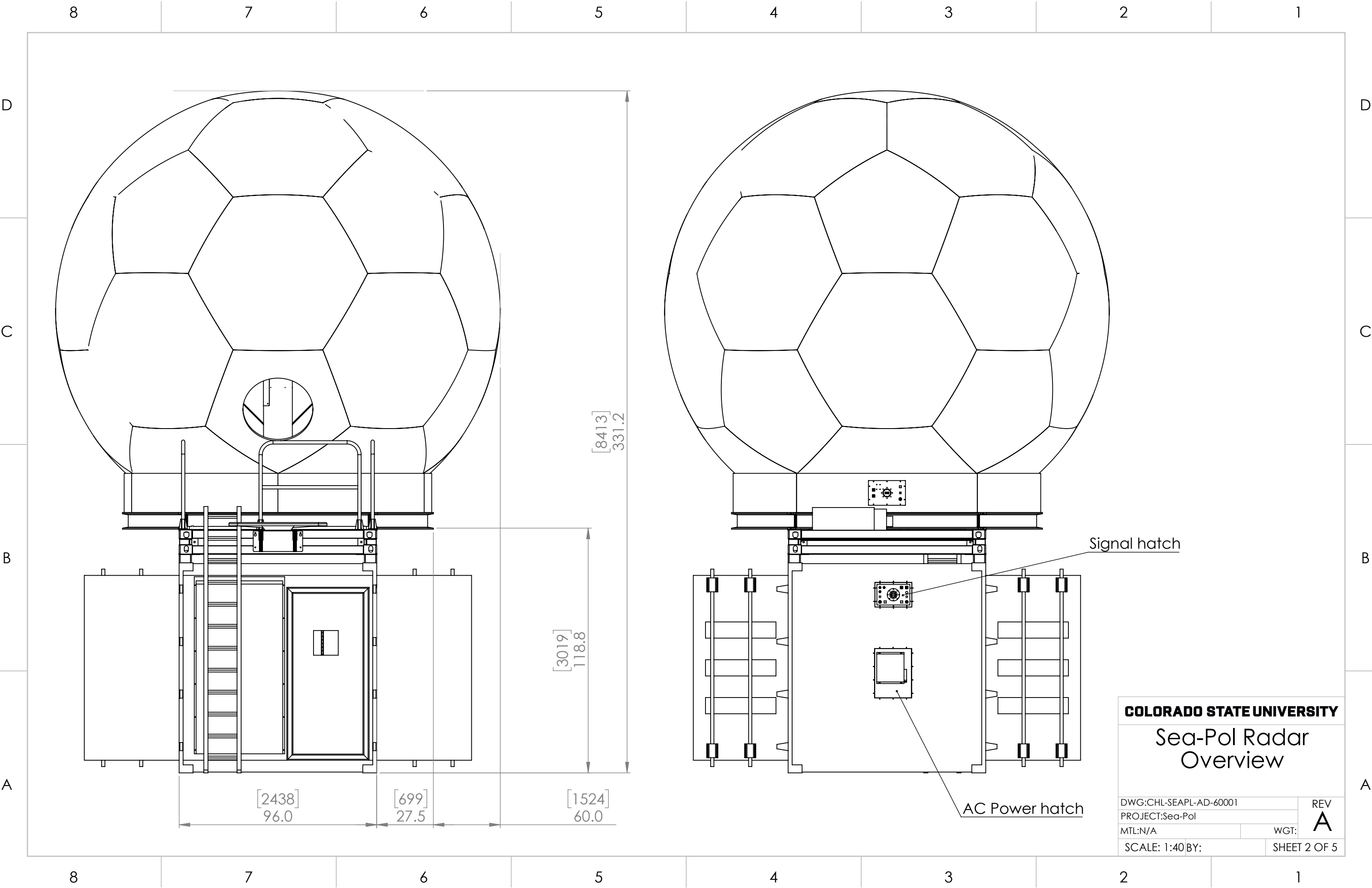


- PRIME POWER
- 240V@100A or 480V@50A AC single phase
  - Meltric DSN100 connectors on 4AWG, 3C type-W cable
- ESTIMATED WEIGHTS
- Overall: 9950 kg/21750 lbs
    - Shelter: 5500 kg/12000 lbs
    - Platform: 3200 kg/7000 lbs
    - Positioner: 640 kg/1400 lbs
    - Radome: 450 kg/1000 lbs
    - Antenna: 160 kg/350 lbs

COLORADO STATE UNIVERSITY

Sea-Pol Radar  
Overview

DWG:CHL-SEAPL-AD-60001			REV <b>A</b>
PROJECT:Sea-Pol			
MTL:N/A		WGT:	
SCALE: 1:40 BY:		SHEET 1 OF 5	



8

7

6

5

4

3

2

1

D

C

B

A

D

C

B

A

8

7

6

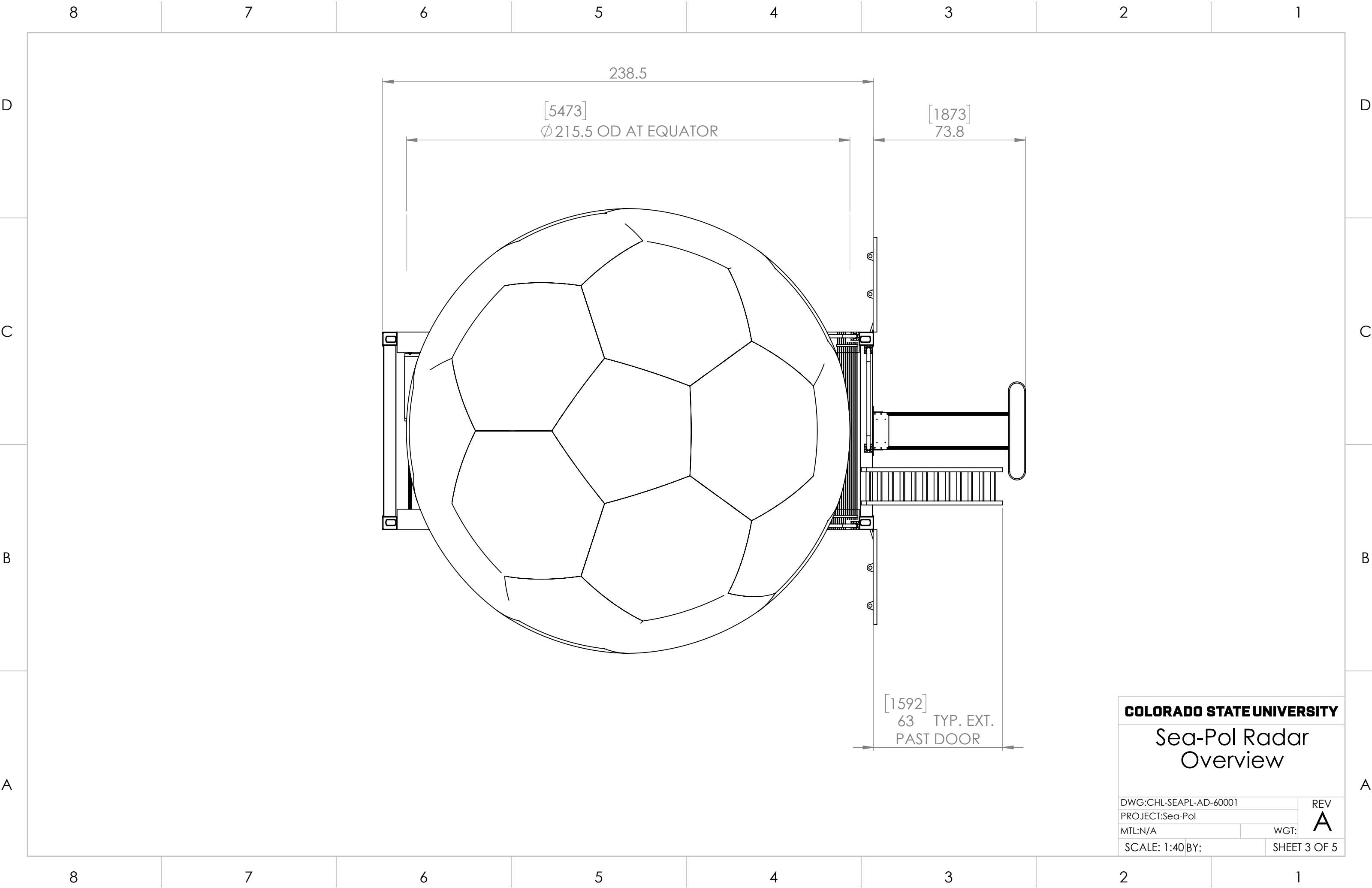
5

4

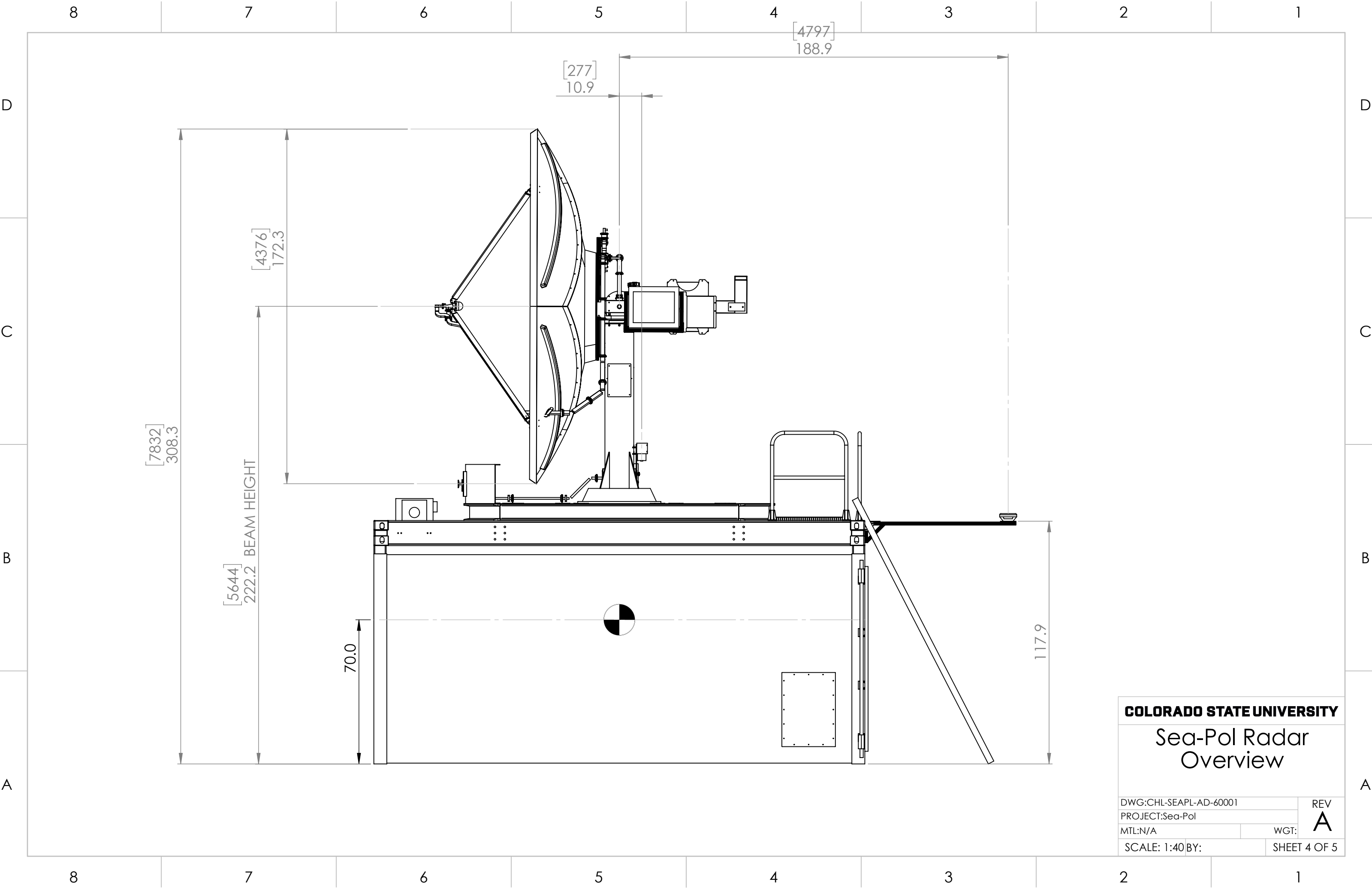
3

2

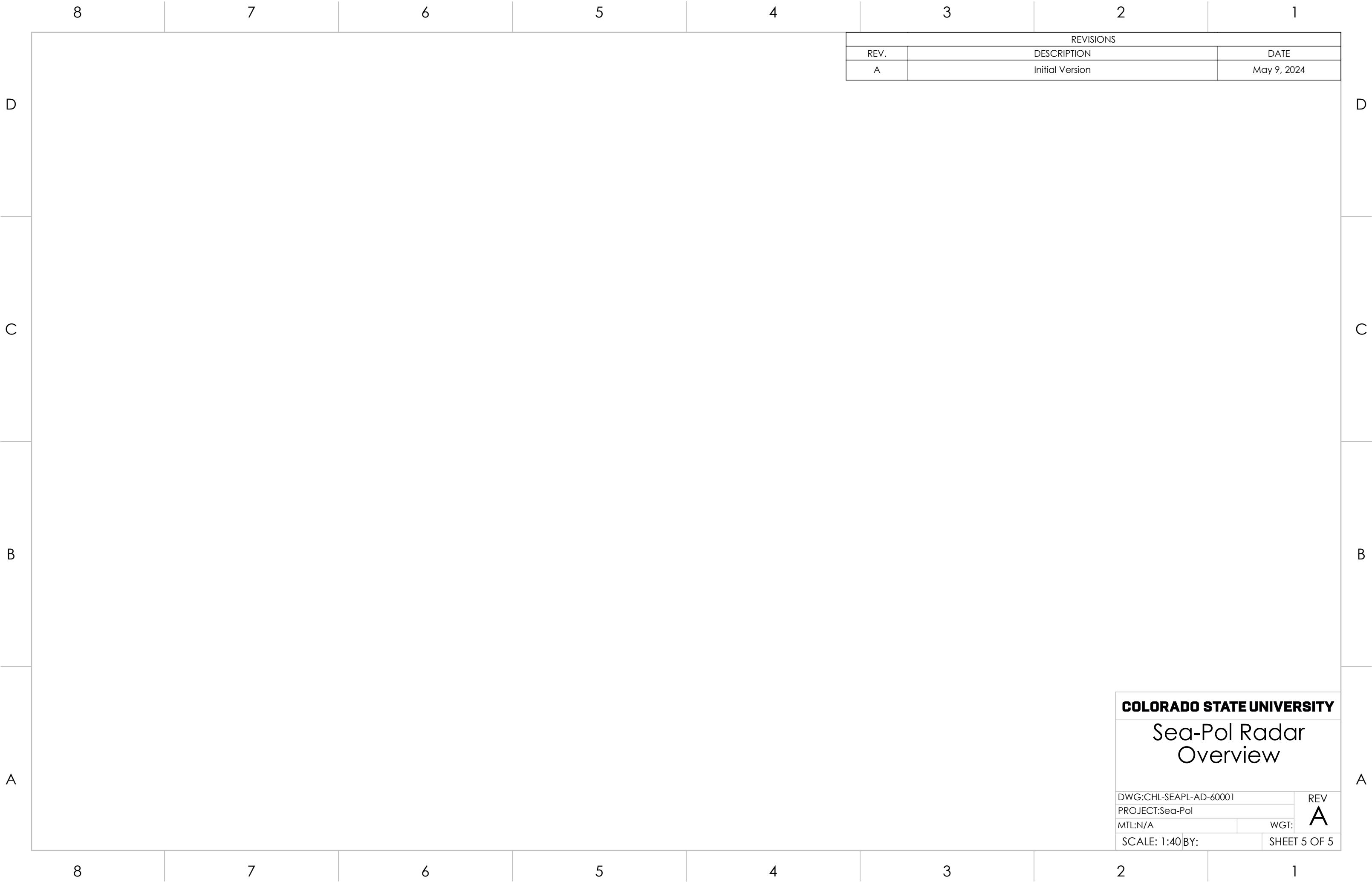
1



COLORADO STATE UNIVERSITY	
Sea-Pol Radar Overview	
DWG:CHL-SEAPL-AD-60001	REV
PROJECT:Sea-Pol	A
MTL:N/A	WGT:
SCALE: 1:40 BY:	SHEET 3 OF 5



COLORADO STATE UNIVERSITY	
Sea-Pol Radar Overview	
DWG:CHL-SEAPL-AD-60001	REV
PROJECT:Sea-Pol	A
MTL:N/A	WGT:
SCALE: 1:40 BY:	SHEET 4 OF 5



REVISIONS		
REV.	DESCRIPTION	DATE
A	Initial Version	May 9, 2024

**COLORADO STATE UNIVERSITY**

Sea-Pol Radar  
Overview

DWG:CHL-SEAPL-AD-60001  
PROJECT:Sea-Pol  
MTL:N/A

SCALE: 1:40 BY:

REV  
**A**  
WGT:

SHEET 5 OF 5